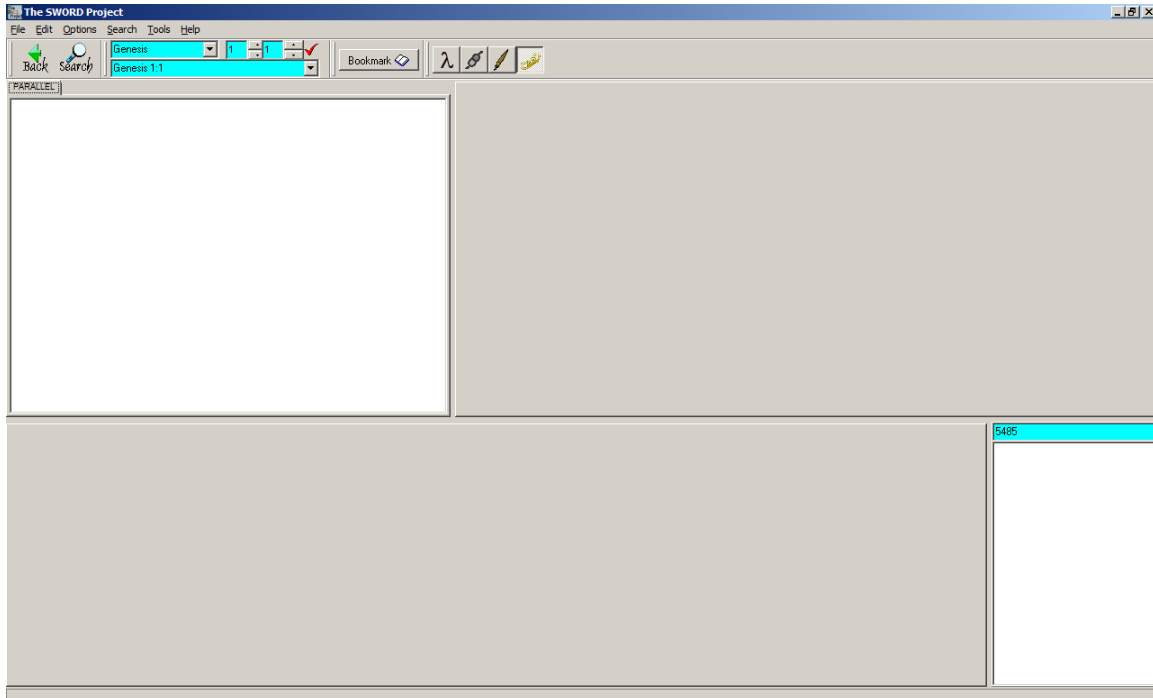
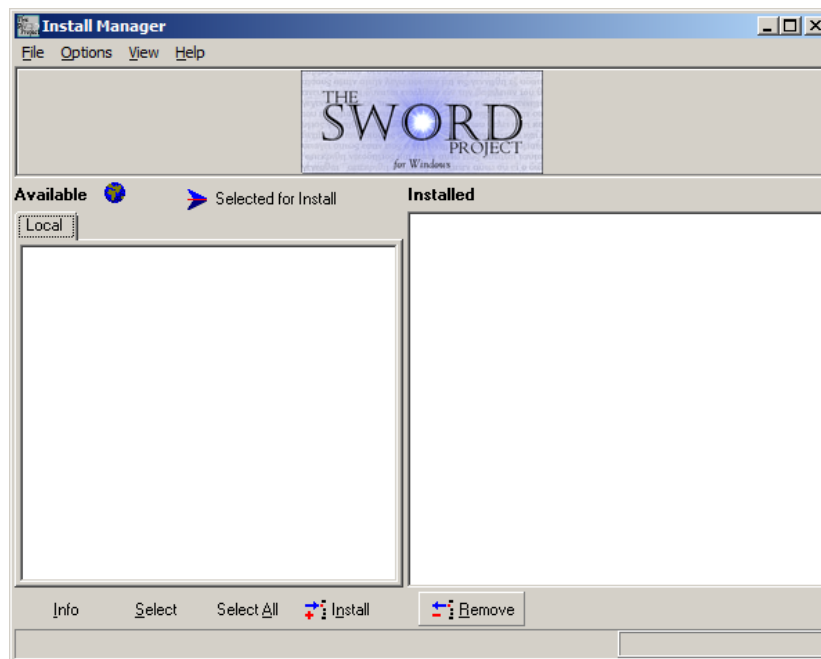


Instructions to install Sword modules (for Windows)

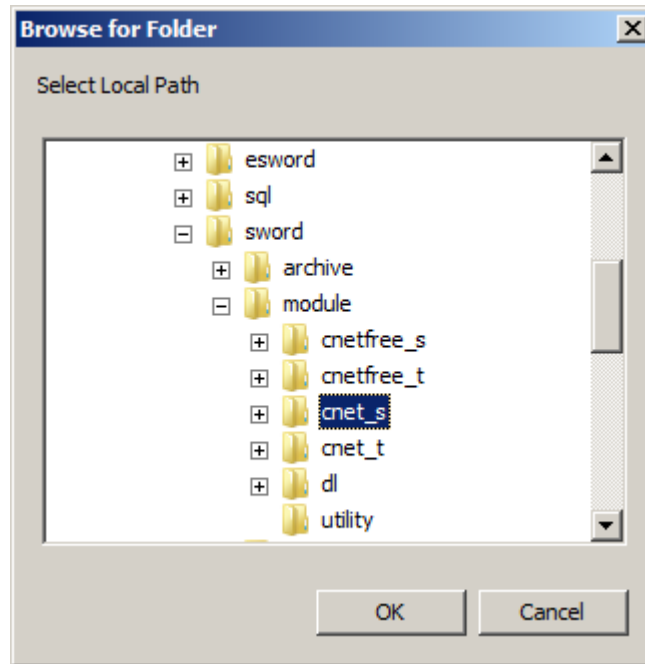
1. Download Sword Project for Windows from <http://crosswire.org/sword/software/biblecs/index.jsp>. Install Sword and open it. The interface is like this:



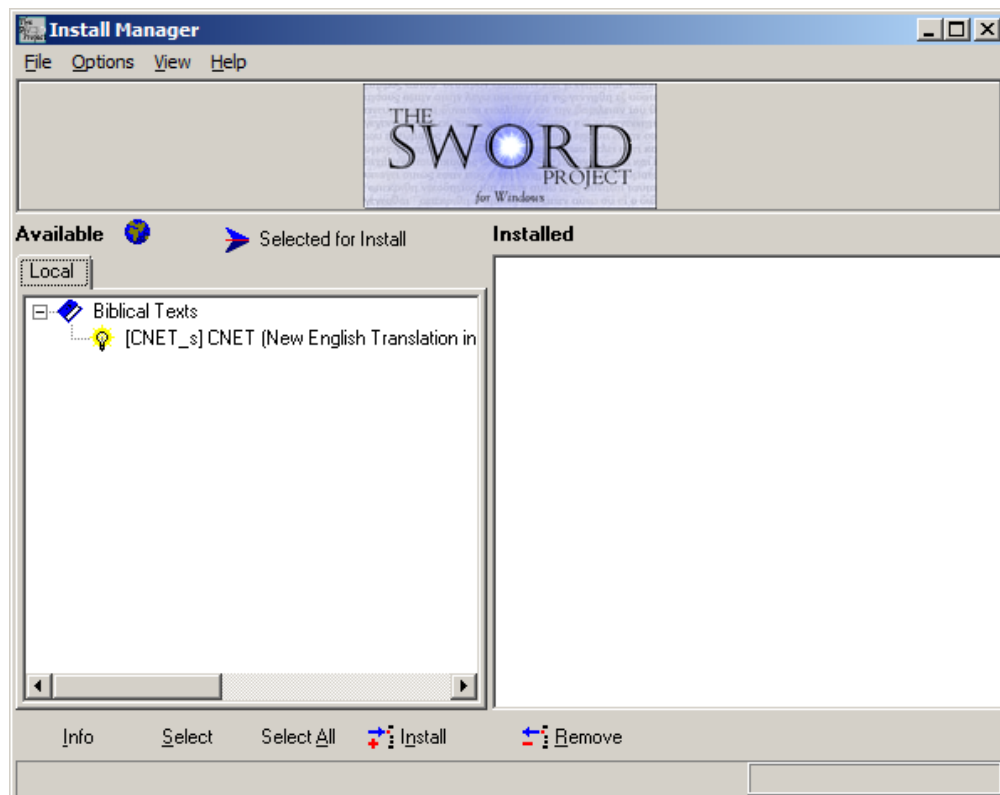
2. Click Tools – Install Manager. The Install Manager will be opened.



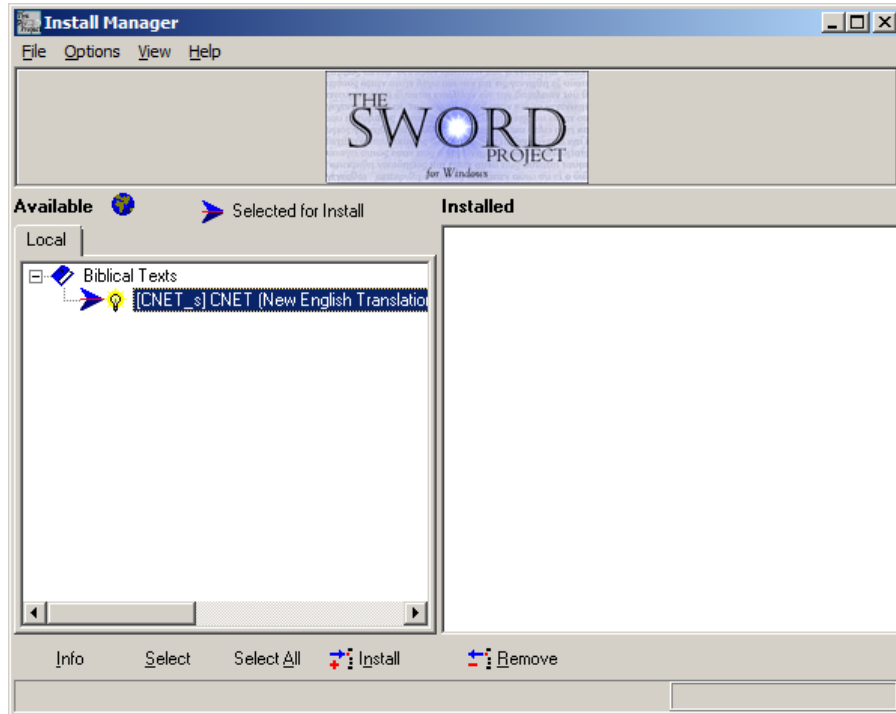
3. In Install Manger, click Options – Local Path, then choose the path of the downloaded and unzipped Chinese NET Bible Sword module, like below:



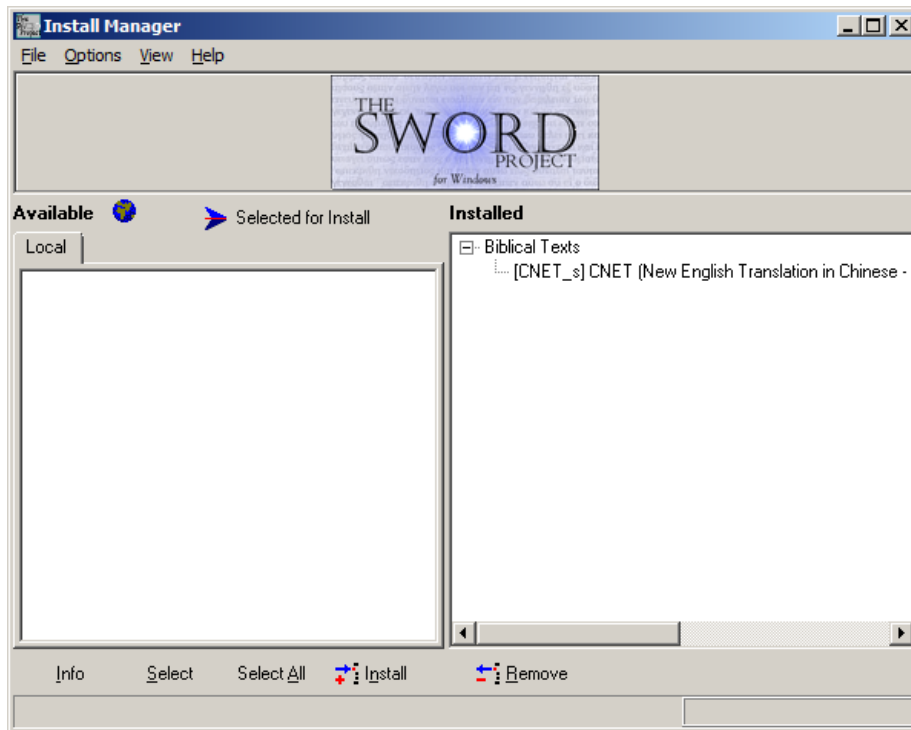
4. Click OK. Now the selected modules will appear on the left-hand side of the Install Manager with a bulb sign💡.



5. Double click the module, the ➤ sign appears, which means the module is selected by Install Manager and ready to be installed.



6. Click Install. Now the module has been installed and appears in the right-hand side of the window. Close the Install Manager.



- Now the module is successfully installed. To view the scriptures, you must restart the Sword software. After restarting Sword, the Chinese NET Bible module appears.

